



Q-Frame® Tex

New
advertising ideas

by combining aluminium and textiles.

Digital Printing & Displays
by **pixis.be**



Q-Frame® Tex50 with bow stands

We know how to meet increasing requirements regarding quality of advertising displays –

Q-Frame® Tex

The aluminium frame-system of our product line Q-Frame® Tex presents your advertising message very flexible and in a high quality. The capabilities are nearly unlimited. At fairs, at the Point of Sale or in office buildings - Q-Frame® Tex combined with high-quality textile advertising prints persuades as an innovative and elegant method of indoor presentation.

You will receive the system partly preassembled.



Q-Frame® Tex50 3-D-effect

ADVANTAGES

- the frame is just a one-time investment
- every individual size is possible
- partly preassembled delivery means very low carrying costs
- the frame can be set up quick and easily
- easy and fast change of the print without any special tool

USE

- wall fastening
- hanging from the ceiling
- freestanding used as partition
- single or double-sided
- using 2 different materials (a dense with a transparent)
- you can create interesting three-dimensional effects
- backlit or unlighted

ADVERTISING PRINTS

materials:

- from opaque up to transparent
- crease-resistant
- also available in flame retardant
- PVC-free, odourless
- washable
- UV resistant

We will be happy to advise you to find the right material. print:

- chemical screen dye printing
- digital chemical dye printing
- digital transfer dye printing



Q-Frame® Tex25, wall fastening



Q-Frame® Tex50 with slide bases

Q-Frame® Tex15

This light and flat frame is particularly suitable for small frame formats fastened at walls and features a perfect price-performance ratio.



Frame profile

- aluminium
- silver-coloured anodised, additional colours on request
- tread depth 15 mm

Cover

- single sided
- materials:
Multisol® D 240 SE, ca. 240 g/m²
Multisol® D*, ca. 205 g/m²
Multisol® L*, ca. 115 g/m²
Dekoflag H*, ca. 110 g/m²

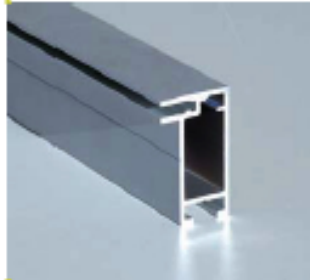
* These materials are also available as flame retardant model according to the German fire class BVDIN 4102.

Use

- wall fastening

Q-Frame® Tex25

With a tread depth of 25 mm you get a stable frame for the presentation of large format wall covers.



Frame profile

- aluminium
- silver-coloured anodised, additional colours on request
- tread depth 25 mm

Cover

- single sided
- materials:
Multisol® D 240 SE, ca. 240 g/m²
Multisol® D*, ca. 205 g/m²
Multisol® L*, ca. 115 g/m²
Dekoflag H*, ca. 110 g/m²

Use

- wall fastening

Q-Frame® Tex50

If used hanging from the ceiling or freestanding – this double-sided frame system can be used very flexible.



Frame profile

- aluminium
- silver-coloured anodised, additional colours on request
- tread depth 50 mm
- with support frame (tread depth > 300 cm)

Cover

- single sided
- materials:
Multisol® D 240 SE, ca. 240 g/m²
Multisol® D*, ca. 205 g/m²
Multisol® L*, ca. 115 g/m²
Dekoflag H*, ca. 110 g/m²
Dekoflag L*, ca. 50 g/m²

Use

- hanging from the ceiling
- freestanding

Q-Frame® Tex150

With this backlit frame your advertising becomes an absolute highlight at fairs, at shop windows or at the Point of Sale.



Support Frame

- aluminium
- silver-coloured anodised, additional colours on request
- tread depth 100 or 150 mm

Cover

- single sided
- materials: :
Lighttex SE, ca. 280 g/m²

(SE = flame retardant)

Use

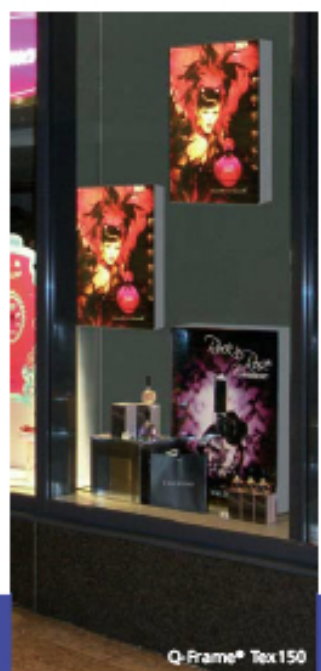
- wall fastening



Q-Frame® Tex15, wall fastening



Q-Frame® Tex50 with stainless steel rope



Q-Frame® Tex150

ACCESSORIES

Accessories Q-Frame® Tex 15

corner bracket set
(4 pairs of corner
brackets incl. Allen key)



tread connector set,
incl. Allen key



wall clamp



Accessories Q-Frame® Tex25

corner bracket set
(4 pairs of corner
brackets incl. Allen key)



tread connector set,
incl. Allen key



wall clamp



Accessories Q-Frame® Tex 50

corner bracket set
(4 pairs of corner
brackets incl. Allen key)



tread connector set,
incl. Allen key



eye screw set
incl. sliding block



bow stand 500 mm,
powder-coated,
incl. mounting



angle stand 600 mm,
powder-coated,
incl. mounting



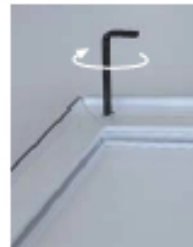
side base 850 mm,
powder-coated, incl.
mounting accessories



MOUNTING

Q-Frame® Tex 15

Combine the frame-parts with 1 pair of corner brackets for each corner and fix the screws afterwards with the Allen key.



Q-Frame® Tex25, Q-Frame® Tex 50

Put the preassembled frame-parts rectangular into each other and fix the screws afterwards with the Allen key.

Q-Frame® Tex150

Mount the clamps for the illumination at the frame-parts.
Put the preassembled frame-parts rectangular into each other and fix the screws afterwards with the Allen key. Install the illumination and the reflector wall.



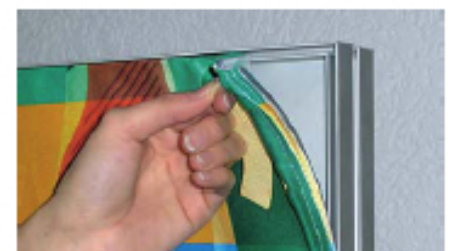
The frames can be fixed afterwards at the wall with the wall clamps or hung down from the ceiling with the stainless steel rope.

Several types of stands for the freestanding presentation exist.

FIXATION OF THE PRINT

The print is equipped with a plastic stripe on all sides which has to be inserted into the slot of the profile.

The print can be changed very quickly without any special tool.



Please note: We are continuously enhancing our products and therefore reserve the right of technical changes and dimensional deviations.